

double exposure

1/2

[re] program
[re] adapt
[re] structure

Category: *Built Projects*

Author: *COVE Architectes*

Collaborators: *Axel Cornu & Gabriel Verret*

Year: 2023 Area: 280 m² Typology: *From a farm to a house*

Location: *15-17 route de Gannat Chamboirat 03450 Ebreuil, Auvergne, France*

PROJECT DESCRIPTION:

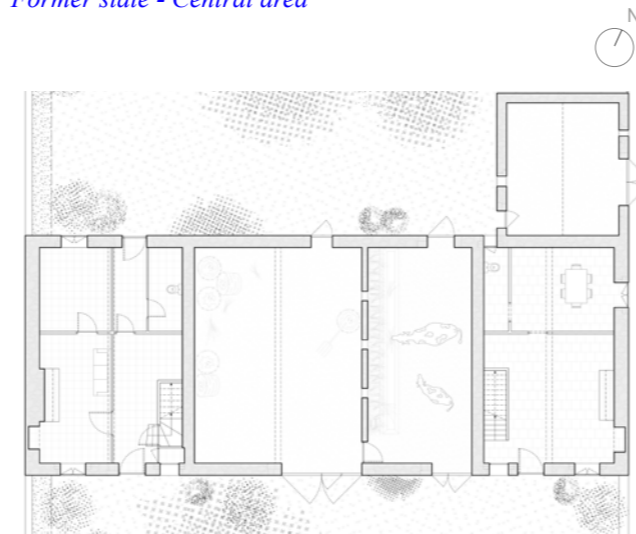
This project's aim was to transform an ancient farmhouse into a family home in Chamboirat, a small hamlet in Auvergne's countryside. This two-century-old barn was a common agricultural heritage in this part of France. Once inside, we discovered what made this place exceptional: 9-meter-high stone masonry walls, a complex wooden framework, and fantastic volumes. The whole place showcased remarkable materiality. When our client shared with us his wish to turn it into a home where he could gather his family for years to come, we agreed that this intervention should primarily respect the distinctive character of the place.

To achieve this, we prioritized a careful and subtle rehabilitation, favoring the continuation of its built culture over disruptive actions. This is why we emphasized the use of minimally processed local materials and artisanal techniques, inspired by the craftsmanship employed in the original construction of the building two hundred years ago. The stone walls were stabilized through lime chainings and selective repairs using cut stones, and then coated with insulation made from lime and hemp, finished with a lime-sand mix. The existing framework, preserved down to the struts, was complemented by new oak beams, rafters, and planks, treated to ensure a unified appearance between the old and new parts.

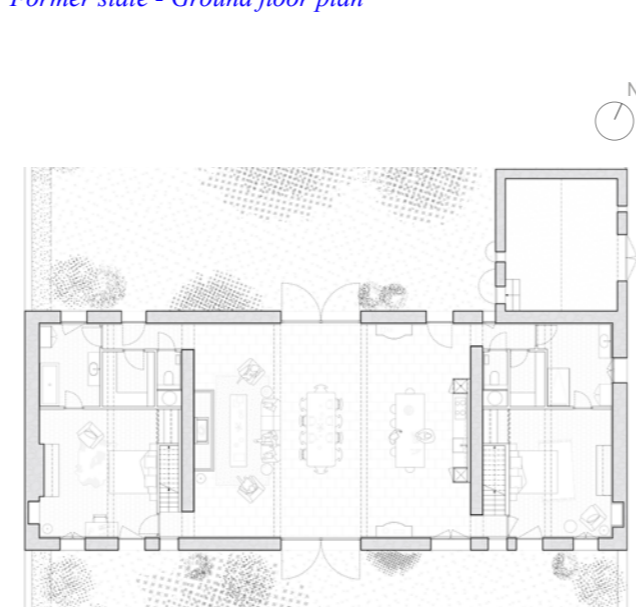
A range of targeted actions allowed us to provide the edifice with longevity and comfort without betraying its nature.



Former state - Central area



Former state - Ground floor plan



Completed project - Ground floor plan



Completed project - Central area